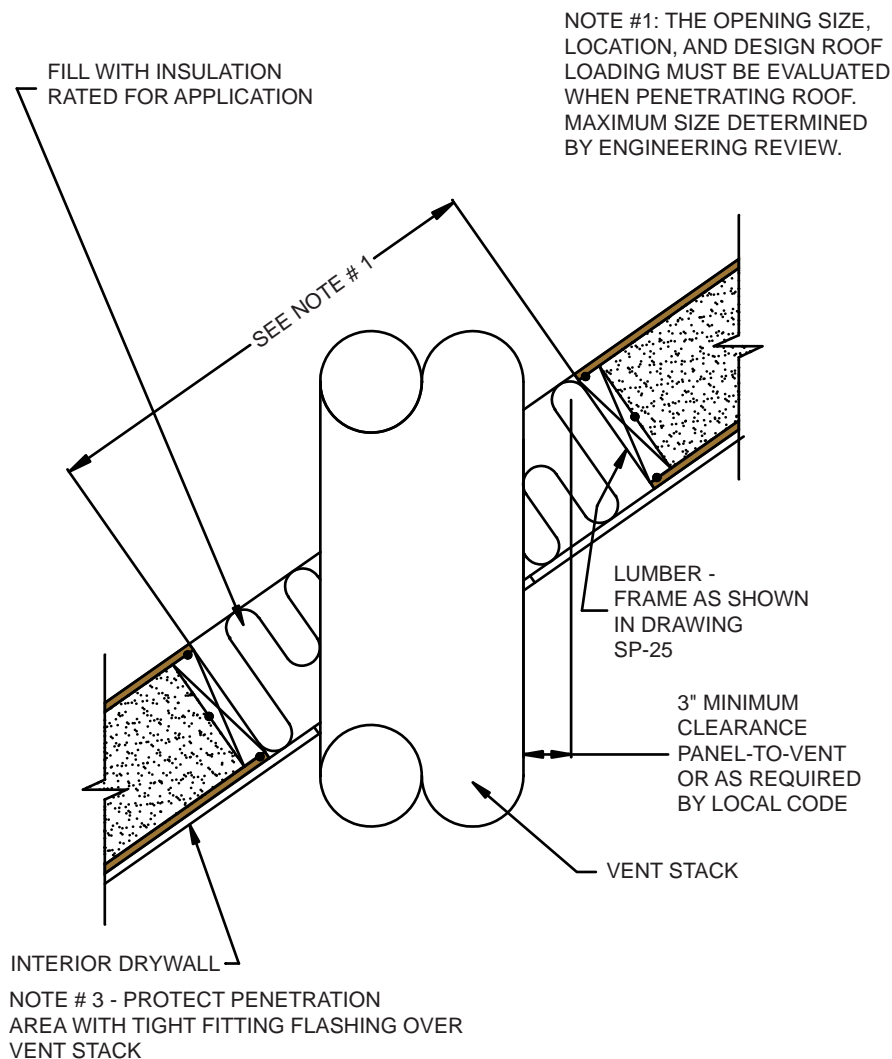


Temperature Warning

Do not expose EPS to temperatures in excess of 160 degrees F. Larger penetrations require framing with 2x lumber to reinforce the opening area and to seal off the EPS core from air infiltration.

Allow a minimum of 3" side clearance between framing and vent. The insulation used between panel framing and vent should be rated for elevated temperatures if necessary. See drawing below. Consult local code for clearance requirements between vent and framing. For size and location limitations, refer to engineering tables.



PorterSIPs - A Brand of PorterCorp
Corporate Headquarters 4240 136th Ave., Holland, MI 49424

Office: 616.738.0995 Fax: 616.928.0076
Email: info@portersips.com Web: www.portersips.com