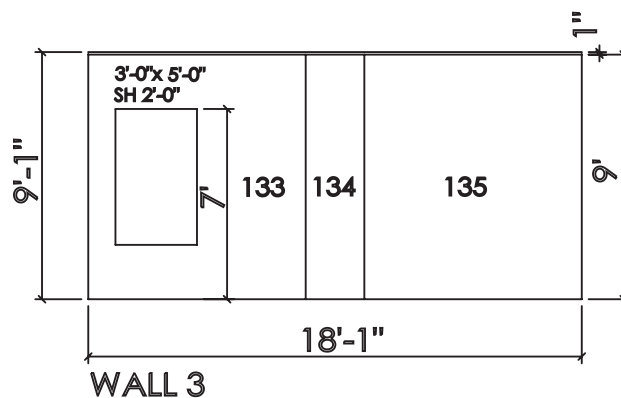
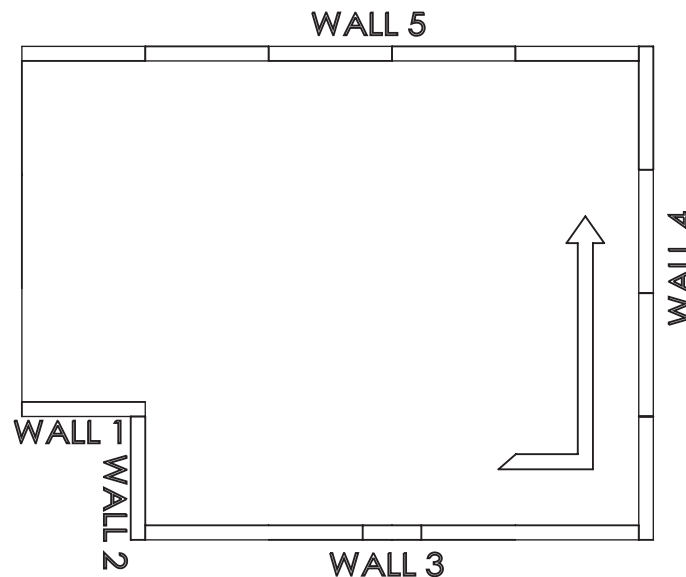


Panel Numbering

When the panel layout plan is made, the panels are numbered beginning at wall #1; this is typically the front, left-hand corner of the print. Individual panels are then numbered sequentially wall by wall in a counter clockwise direction, or left to right along each wall section. Like size panels may be numbered the same, so refer to the included panel installation pack for specific panel locations.

As panels are manufactured they are numbered (marked) to indicate the panel location in the building. The sequence-of-assembly will generally correspond to the number sequence on the panels. As example, panels will be marked 1, 2, etc. Panel numbering should be followed so that panels are installed in their correct location.



PorterSIPs - A Brand of PorterCorp
 Corporate Headquarters 4240 136th Ave., Holland, MI 49424

Office 616.738.0995 **Fax:** 616.928.0076
Email: info@portersips.com **Web:** www.portersips.com