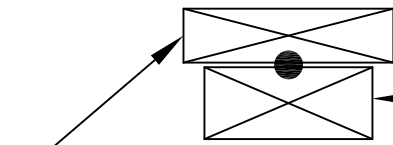
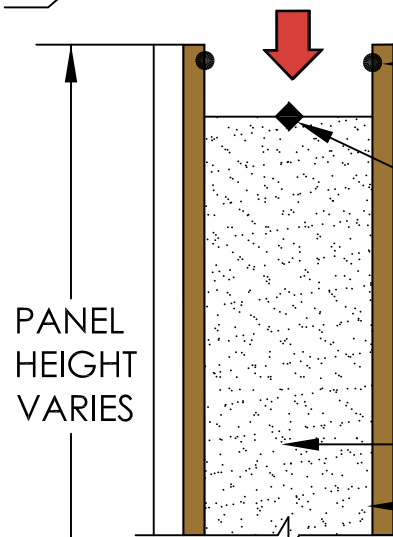


SPACER PLATE BEARS ON  
PANEL OSB - THICKNESS  
AND SHAPE CAN VARY -  
USED TO ADJUST WALL  
HEIGHT



2X LUMBER TOP PLATE  
CONSTRUCTION SEALANT,  
1/4" BEAD- CONTINUOUS  
WOOD-TO-WOOD  
CONNECTIONS TYP.



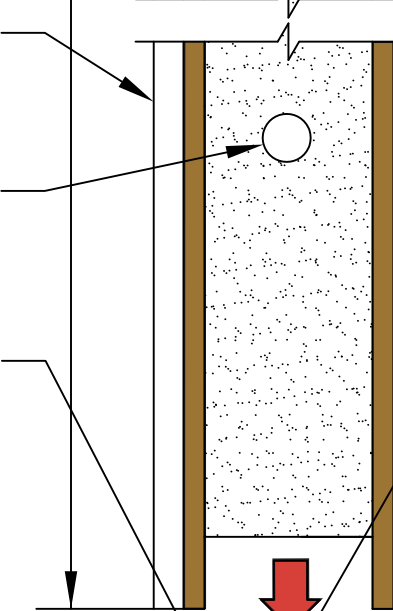
EXPANDING FOAM SEALANT  
3/8" BEAD-CONTINUOUS  
EPS-TO-WOOD - TYP.

7/16" OSB - TYP.

EPS FOAM

PORTERSIP

APPROVED OUTSIDE  
CLADDING OVER  
VAPOR PERMEABLE  
DRAIN PLANE  
(HOUSE WRAP)



A THERMAL BARRIER OF 1/2"  
DRYWALL, OR EQUIVALENT,  
BY OTHERS, WHEN REQUIRED.

EXPANDING FOAM SEALANT  
3/8" BEAD-CONTINUOUS  
EPS-TO-WOOD - TYP.

2X LUMBER SILL PLATE

TREATED SILL PLATE -  
FULL WIDTH OF PANEL -  
TO BE USED WHEN INSTALLED  
OVER CONCRETE

WIRE CHASE - AS SPECIFIED

CONSTRUCTION SEALANT,  
1/4" BEAD- CONTINUOUS  
WOOD-TO-WOOD  
CONNECTIONS TYP.

**NOTE:**

FOR FASTENER  
DETAIL, SEE  
APPROPRIATE  
SECTION

ALL FASTENERS SHOWN ARE MINIMUM REQUIREMENTS AND MAY BE CHANGED BY THE ENGINEER OF RECORD TO MEET DESIGN REQUIREMENTS.

UNLESS OTHERWISE NOTED, ANY AND ALL LUMBER AND ENGINEERED LUMBER TO BE PROVIDED BY OTHERS.

CONSTRUCTION DETAILS MAY SHOW ITEMS THAT ARE NOT SUPPLIED BY PORTERCORP. FASTENING OF MATERIALS NOT SUPPLIED BY PORTERCORP IS THE RESPONSIBILITY OF THE INSTALLER. PLEASE CONTACT YOUR SALES REPRESENTATIVE IF YOU HAVE ANY QUESTIONS ABOUT YOUR ORDER.

SIP INSTALLER IS RESPONSIBLE FOR THE PROPER INSTALLATION OF PANELS. THIS IS AN ENGINEERED SYSTEM. FAILURE TO FOLLOW ALL CONSTRUCTION DETAILS AND INFORMATION IN FASTENER SCHEDULE WILL VOID THE PORTERSIP WARRANTY. PLEASE CONTACT PORTERCORP WITH ANY QUESTIONS.

SIP TAPE IS APPLIED TO THE PREDOMINANTLY WARM SIDE OF THE JOINT. INSIDE IN NORTHERN, COLDER CLIMATES; OUTSIDE IN SOUTHERN, WARMER CLIMATES.

**PORTERcorp**

Manufacturers of PorterSIPs®

4240 N. 136th Ave phone. 616.399.1963  
Holland, MI 49424 fax. 616.928.0076

**W-1**

WALL SECTION

CONFIDENTIAL DRAWING INFORMATION CONTAINED HEREIN IS THE PROPERTY OF PORTERCORP. DRAWING IS NOT TO BE COPIED OR DISCLOSED TO OTHERS WITHOUT THE CONSENT OF PORTERCORP.