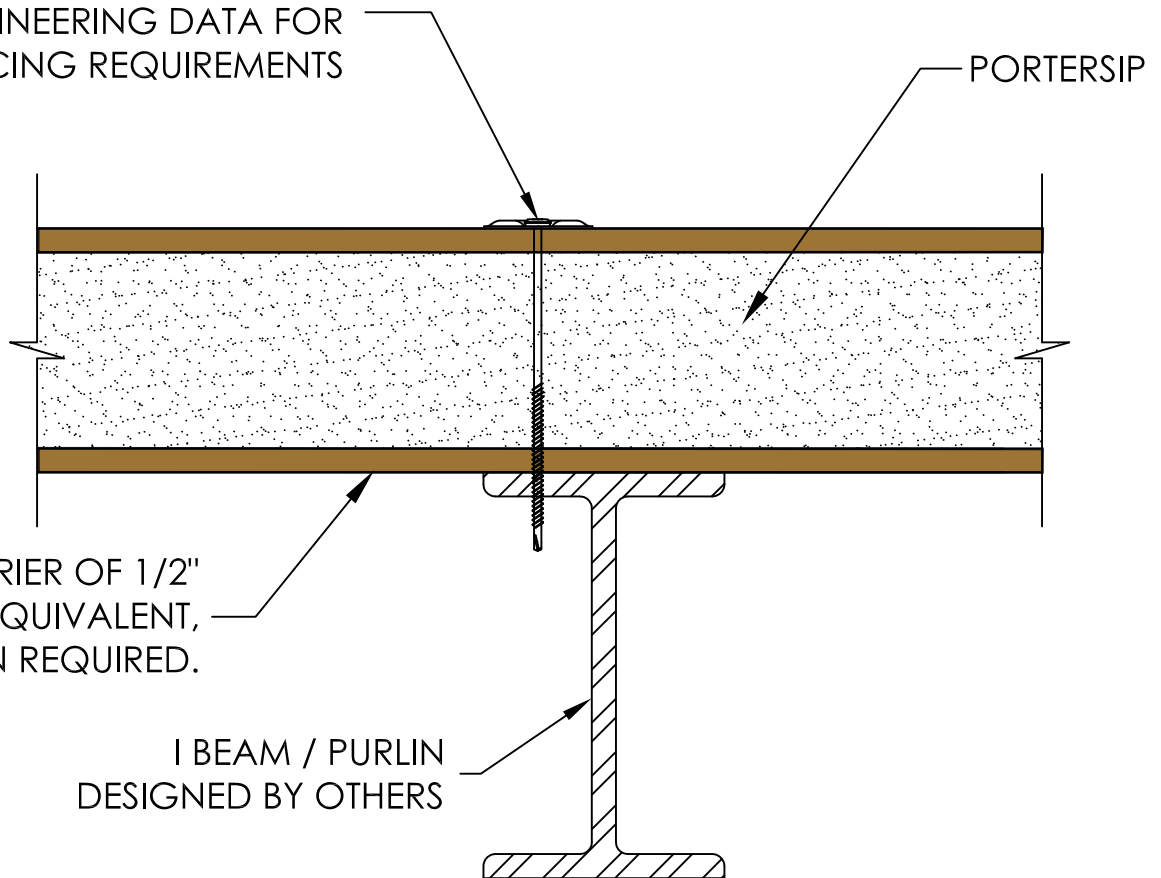


SIPHD SCREW (W/ WASHER) 1 1/2"  
 LONGER THAN PANEL THICKNESS  
 SEE ENGINEERING DATA FOR  
 SPACING REQUIREMENTS



A THERMAL BARRIER OF 1/2"  
 DRYWALL, OR EQUIVALENT,  
 BY OTHERS, WHEN REQUIRED.

I BEAM / PURLIN  
 DESIGNED BY OTHERS

ALL FASTENERS SHOWN ARE MINIMUM REQUIREMENTS AND MAY BE CHANGED BY THE ENGINEER OF RECORD TO MEET DESIGN REQUIREMENTS.

CONSTRUCTION DETAILS MAY SHOW ITEMS THAT ARE NOT SUPPLIED BY PORTERCORP. FASTENING OF MATERIALS NOT SUPPLIED BY PORTERCORP IS THE RESPONSIBILITY OF THE INSTALLER. PLEASE CONTACT YOUR SALES REPRESENTATIVE IF YOU HAVE ANY QUESTIONS ABOUT YOUR ORDER.

SIP TAPE IS APPLIED TO THE PREDOMINANTLY WARM SIDE OF THE JOINT. INSIDE IN NORTHERN, COLDER CLIMATES; OUTSIDE IN SOUTHERN, WARMER CLIMATES.

UNLESS OTHERWISE NOTED, ANY AND ALL LUMBER AND ENGINEERED LUMBER TO BE PROVIDED BY OTHERS.

SIP INSTALLER IS RESPONSIBLE FOR THE PROPER INSTALLATION OF PANELS. THIS IS AN ENGINEERED SYSTEM. FAILURE TO FOLLOW ALL CONSTRUCTION DETAILS AND INFORMATION IN FASTENER SCHEDULE WILL VOID THE PORTERSIP WARRANTY. PLEASE CONTACT PORTERCORP WITH ANY QUESTIONS.

**PORTERcorp**

Manufacturers of PorterSIPS®

4240 N. 136th Ave phone. 616.399.1963  
 Holland, MI 49424 fax. 616.928.0076

**R-12**

PANEL TO STEEL I-BEAM / PURLIN

CONFIDENTIAL DRAWING INFORMATION CONTAINED HEREIN IS THE PROPERTY OF PORTERCORP. DRAWING IS NOT TO BE COPIED OR DISCLOSED TO OTHERS WITHOUT THE CONSENT OF PORTERCORP.