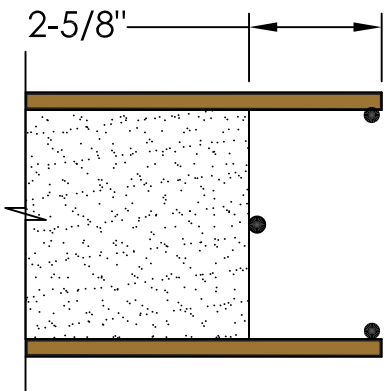
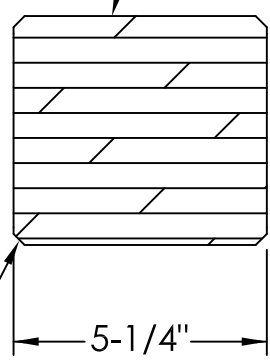


EPS REMOVED TO PROVIDE CLEARANCE FOR PSL POST - TYP.

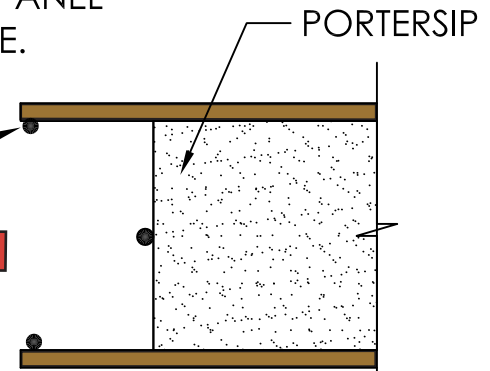


APPLYING A SLIGHT CHAMFER TO THE EDGES OF THE 2X WILL AID IN JOINING TO THE NEXT PANEL

INSERT PSL POST INTO ONE PANEL, THEN SLIDE NEXT PANEL OVER SPLINE.



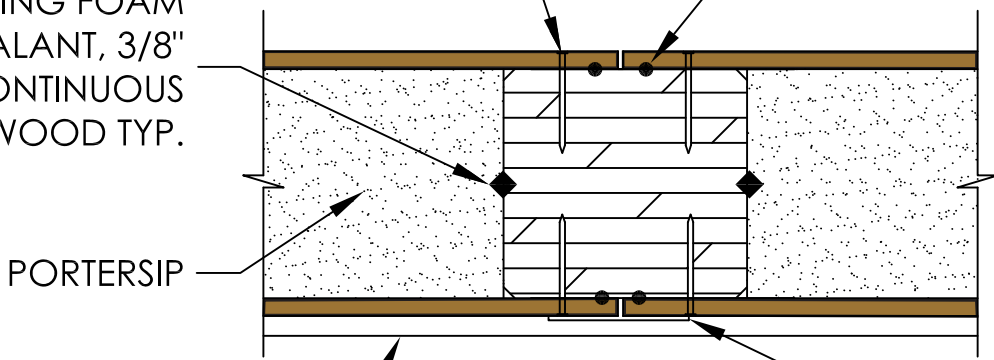
HORIZONTAL SECTION  
PANELS BEFORE ASSEMBLY



APPLY EXPANDING FOAM ALONG INSIDE EDGE OF OSB - CONTINUOUS

2-1/2" X 0.131" RING SHANK NAILS  
6" O.C. STAGGERED TYP. BOTH SIDES  
EXPANDING FOAM SEALANT, 3/8"  
BEAD CONTINUOUS  
EPS-TO-WOOD TYP.

CONSTRUCTION SEALANT, 1/4"  
BEAD-CONTINUOUS WOOD-TO-  
WOOD CONNECTIONS TYP.



A THERMAL BARRIER OF 1/2"  
DRYWALL, OR EQUIVALENT,  
BY OTHERS, WHEN REQUIRED.

HORIZONTAL SECTION  
PANELS ASSEMBLED

ALL FASTENERS SHOWN ARE MINIMUM REQUIREMENTS AND MAY BE CHANGED BY THE ENGINEER OF RECORD TO MEET DESIGN REQUIREMENTS.

UNLESS OTHERWISE NOTED, ANY AND ALL LUMBER AND ENGINEERED LUMBER TO BE PROVIDED BY OTHERS.

CONSTRUCTION DETAILS MAY SHOW ITEMS THAT ARE NOT SUPPLIED BY PORTERCORP. FASTENING OF MATERIALS NOT SUPPLIED BY PORTERCORP IS THE RESPONSIBILITY OF THE INSTALLER. PLEASE CONTACT YOUR SALES REPRESENTATIVE IF YOU HAVE ANY QUESTIONS ABOUT YOUR ORDER.

SIP INSTALLER IS RESPONSIBLE FOR THE PROPER INSTALLATION OF PANELS. THIS IS AN ENGINEERED SYSTEM. FAILURE TO FOLLOW ALL CONSTRUCTION DETAILS AND INFORMATION IN FASTENER SCHEDULE WILL VOID THE PORTERSIP WARRANTY. PLEASE CONTACT PORTERCORP WITH ANY QUESTIONS.

SIP TAPE IS APPLIED TO THE PREDOMINANTLY WARM SIDE OF THE JOINT. INSIDE IN NORTHERN, COLDER CLIMATES; OUTSIDE IN SOUTHERN, WARMER CLIMATES.

**PORTERcorp**

Manufacturers of PorterSIPs®

4240 N. 136th Ave phone. 616.399.1963  
Holland, MI 49424 fax. 616.928.0076

**P-11**

PANEL-TO-PANEL CONNECTION  
WITH 5-1/4" X 5-1/4" PSL POST

CONFIDENTIAL DRAWING INFORMATION CONTAINED HEREIN IS THE PROPERTY OF PORTERCORP. DRAWING IS NOT TO BE COPIED OR DISCLOSED TO OTHERS WITHOUT THE CONSENT OF PORTERCORP.